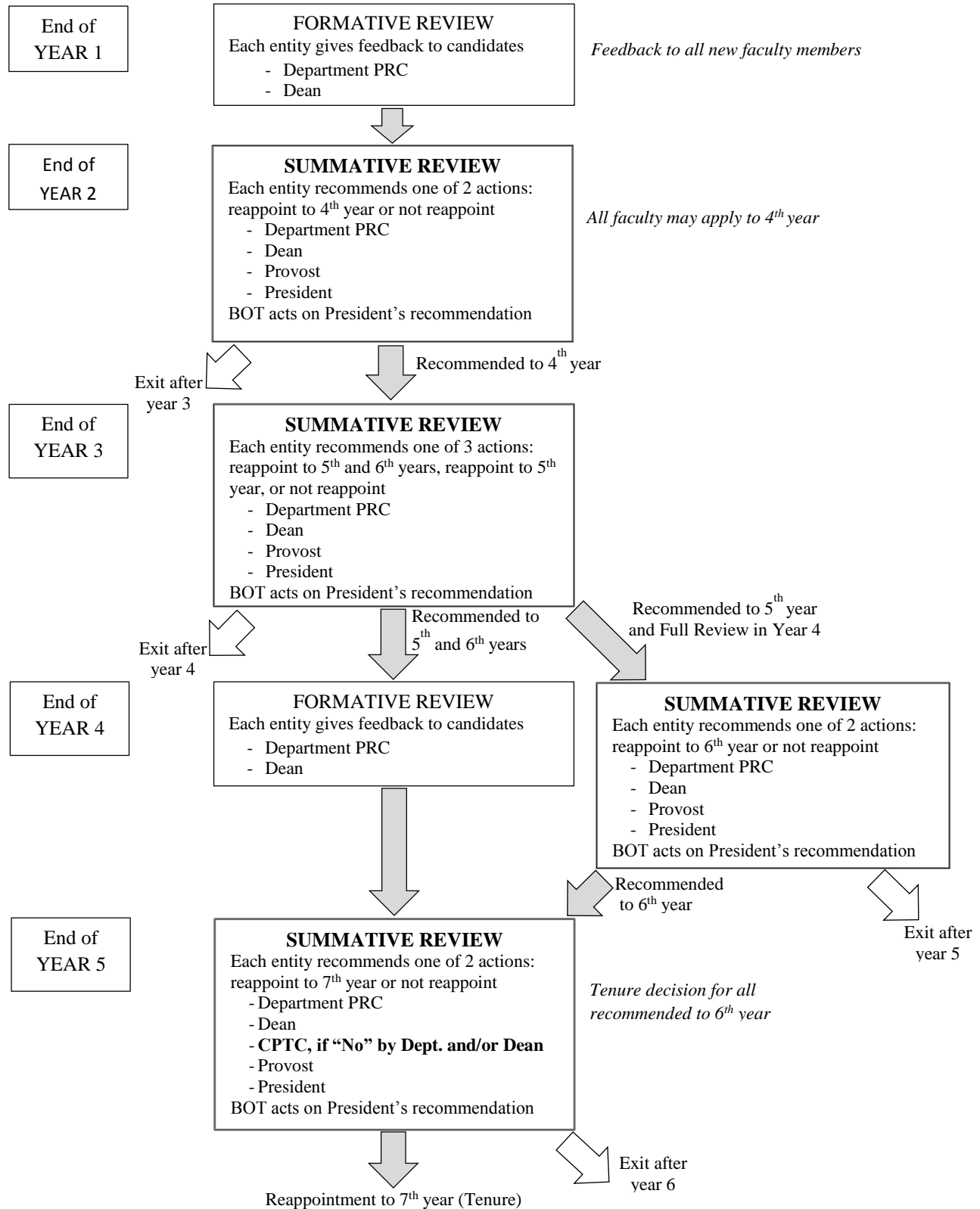


Reappointment process*



* Note that this flowchart applies to faculty hired after 08/01/15. The possibility of earning promotion together with tenure is optional for faculty hired between 07/16/14 and 07/31/15. Also, this chart illustrates the reappointment process under the regularly established timeline and does not illustrate the Modified Reappointment Process for Applicants with a Qualifying Life Event.